

| General          |  |
|------------------|--|
| Shape            | Rectangular  |
| Seating Capacity | n/a  |
| Shell Material   | Dura Tex™  |
| Dimensions       | 92 1/4" x 156 1/2" x 52" H / (234cm X 397cm x 132cm H) |
| Corner Radii     | 10" / (R25cm)  |
| Water Capacity   | 1350 gallons (5110 Liters)                             |
| Dry Weight       | 2406 lbs (1091 kg)                                     |
| Shipping Weight  | 2406 lbs (1091 kg)                                     |
| Full Weight      | 13651 lbs. (6191 kg)                                   |
| Skirt Material   | Wood or Synthetic optional                             |

| Water System                          |                         |
|---------------------------------------|-------------------------|
| Water Treatment System                | Ultrapure Optional      |
| Plumbing System                       | 1                       |
| Filters/Coverage                      | 3 / 50 sq. ft           |
| Gate Valves                           | 4 Standard (6 optional) |
| VCR Jet® - Air Adjustable/Directional | 0                       |
| VCR Jet® - Rotator                    | 0                       |
| VCR Jet® - Dual Rotator               | 0                       |
| VCR Jet® - Multi Port Spinner         | 0                       |
| VCR Jet® - Mini Rotator               | 0                       |
| VCR Jet® - Mini Directional           | 0                       |
| VCR Jet® - Euro Rotator               | 0                       |
| VCR Jet® - Euro Directional           | 0                       |
| VCR Jet® - Mini Directional in NFJ    | 0                       |
| Typhoon Jet                           | 0                       |
| Swim Jets                             | 4 Standard (6 optional) |
| Ozone Jet                             | 1*                      |
| Heater Return Jet                     | 0                       |
| Pump Returns                          | 6                       |
| Diverter Valve                        | 0                       |
| Floor Drains                          | 1                       |
| Skimmer                               | 2                       |

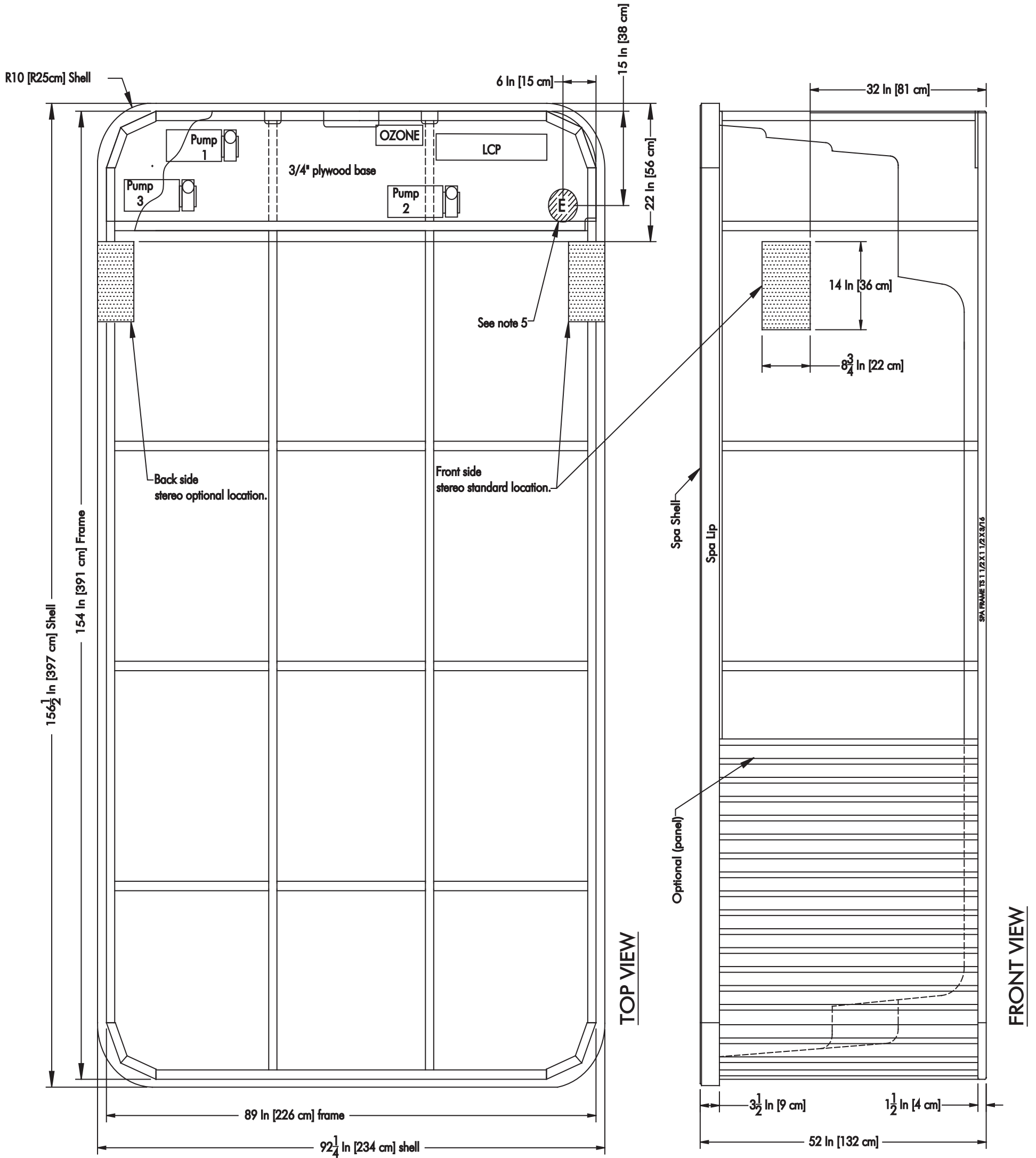
| Special Features      |             |
|-----------------------|-------------|
| NeckFlex® Jet Pillows | 0           |
| Headrest Pillows      | 0           |
| Optimounts™           | 6           |
| Tether Mount          | 1           |
| Bar                   | 1-24" 2-32" |
| Swim Jet Air Valve    | 2           |
| Swim Tether           | 1           |
| Stereo                | Optional    |

| Pump Information                  | Domestic (60Hz)  | Export (50Hz)  |
|-----------------------------------|--|--|
| Motor Size - Peak (Continuous) HP | 5.0 (3.0) HP   | 3.6 (2.0) HP   |
| Jet Pumps # of Pumps/Speed        | 1 / Dual & 1 single (Standard) or (1 / Dual & 2 Single Optional) | 1 / Dual & 1 single (Standard) or (1 / Dual & 2 Single Optional) |
| Circulation Pump                  | 1 Optional with Ultrapure  | 1 Optional with Ultrapure  |
| Electrical System                 | Domestic (60Hz)  | Export (50Hz)  |
| Voltage                           | 240  | 230  |
| Amperage                          | 50/40  | 1x32 / 3x16 / 2x16   |
| Heater                            | 5.5 kW*  | 5.2 kW*  |
| Thermostat                        | Electronic *   | Electronic *   |
| Light                             | 2 multi color LED**  | 2 multi color LED**  |
| Control System                    | Gecko Alliance*  | Gecko Alliance*  |
| Upper Control                     | Gecko Alliance*  | Gecko Alliance*  |



- Note: 1. Subject to change without notice.  
 2. \* For builder's pack models the following equipment is not supplied.  
 Ozone Jets, water treatment system, heater, thermostat, upper control, control system and pumps.  
 3. \*\* Builder's pack light is an incandescent bulb

# Aqua Sport 13' Architectural Specification



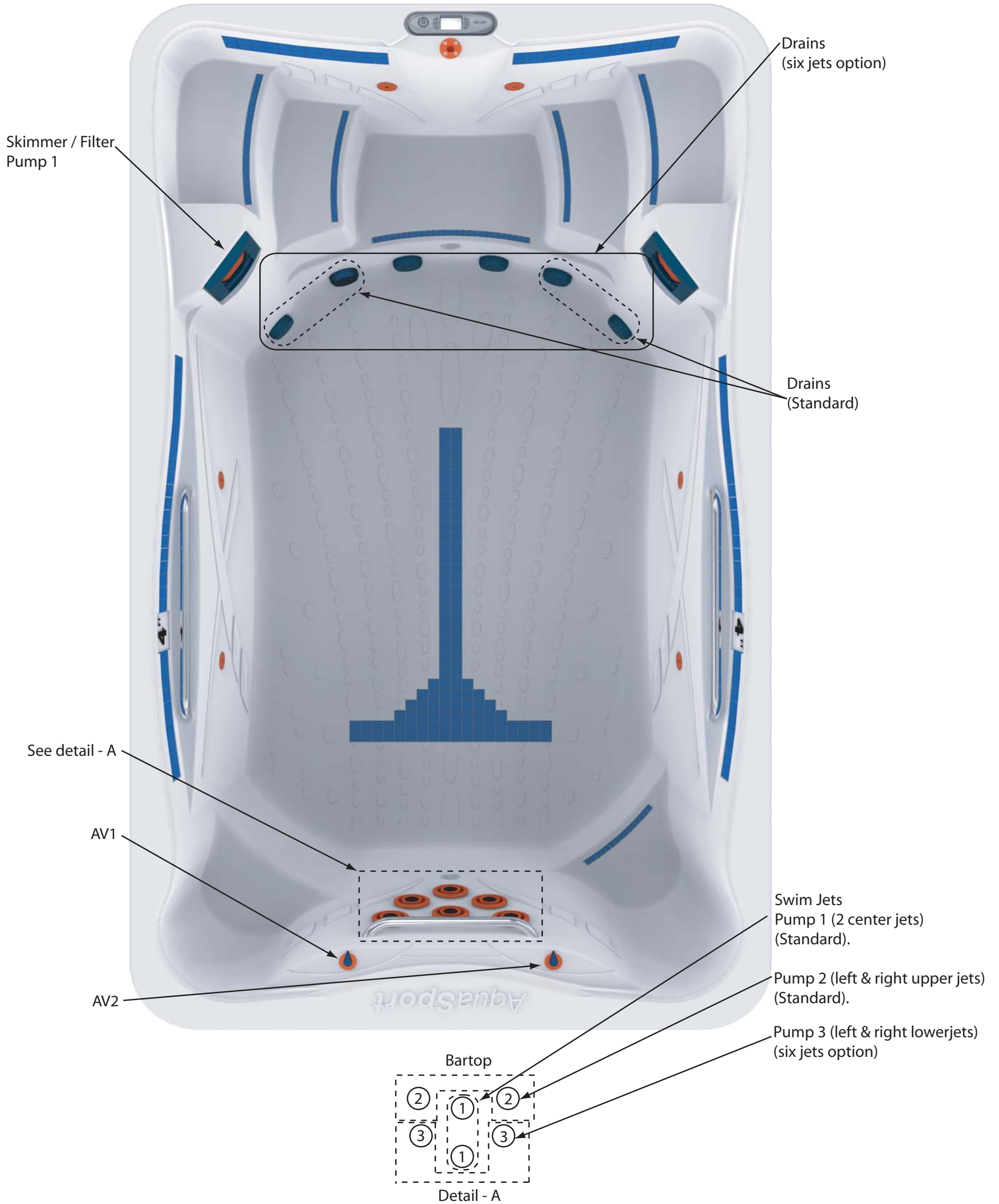
**AFS MUST BE FULLY SUPPORTED OVER THE ENTIRE BASE.  
REFER TO D1 DOC-138 FOR INSTALLATION DETAILS.**

- Note: 1. Subject to change without notice.  
 2. Engineering specs may differ slightly from brochure.  
 3. Optional cabinets may add significant weight. Ask your dealer for exact details.  
 4. Pumps and control panels are not supplied with builder's pack.  
 5. This is the approximate location to bring power through the bottom of the spa.  
 6. Pump 3, Ozone and stereo are optional.

**Legend**  
 Pump - P  
 Electrical - E  
 Lower Control Panel - LCP  
 Upper Control Panel - UCP

**Caution:**  
 Due to manufacturing tolerances there could be some minor differences between the actual spa and the drawing above. If site planning is critical to such tolerances, be sure to measure your actual spa.

# Aqua Sport 13' Plumbing Configuration



**Note:** 1. Subject to change without notice.

2. AV1 = Air Valve 1, control right and left top and bottom swim jets.

3. AV2 = Air Valve 2, control center swim jets.

4. All Drains in common loop with pump 1, 2 and optional pump 3.

# Aqua Sport 13' Jet Insert Designations



Note: 1. Subject to change without notice.  
 2. \* Some equipment shown is not supplied with builder's pack.